

SPECIFICATIONS

Model name	AE-200ALA	AE-200ALD
Application	Join materials type (medium-weight)	Pin tuck type
Machine head	DLU-5498N-7 (exclusive machine head for AE-200A)	
Sewing speed	200~3,500sti/min*	
Max. stitch length	4mm	
Max. top-feed amount	8mm	
Lift of the presser foot	10mm	
Needle	DBX1(#11) #9~#18	
Sewing condition	(Seam allowance) 1~30mm (Curve sewing) 100mmR or more (Number of plies) Two or one	
Compressed air	0.5MPa	
Power requirement Power consumption	Single, 3-phase 200~240V/220W	
Dimensions	<p>(Dimensions are given in millimeters.)</p>	
Total weight	135kg (when all options are installed)	

sti/min stands for "Stitches per Minute."

AE-200A Series

Edge Control Seamer

AE-200ALA Join materials type
AE-200ALD Pin tuck type



VIET LE CO., LTD.
Sewing & Textile machines and Parts

HOTLINE: 0982 085 899

This is an edge control seamer which automatically produces beautiful "seams" on materials in diversified designs.

AE-200A Series



Registered Organization : JUKI CORPORATION Head Office
The Scope of the Registration : The activities of research, development, design, sales, distribution, and maintenance services of industrial sewing machines, household sewing machines and industrial robots, etc., including sales and maintenance services of data entry systems.

JUKI
JUKI CORPORATION
SEWING MACHINERY & SYSTEMS BUSINESS UNIT

2-11-1, TSURUMAKI, TAMA-SHI,
TOKYO 206-8551, JAPAN
PHONE : (81) 42-357-2370
FAX : (81) 42-357-2274
<http://www.juki.com>

* Specifications and appearance are subject to change without prior notice for improvement.
* Read the instruction manual before putting the machine into service to ensure safety.
* This catalogue prints with environment-friendly soyink on recycle paper.

With JUKI's unique material end control technique, the sewing machine joins materials with delicate and high-quality seams.



AE-200ALA Join materials type

The AE-200A edge control seamer is now launched. The machine is configured with JUKI's unique sensor and manipulator-control mechanisms allowing inexperienced operators to join materials with different curves with great finesses matching the finished seam quality of highly skilled operators. Sewing specifications can be quickly and accurately adjusted via touch panel to meet the requirement of various design changes and which helps operators join materials nimbly and skillfully while enhancing productivity even in sewing processes for custom-designed articles in small lots.

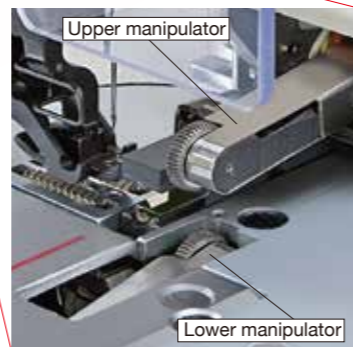
High-quality joining of materials

The sewing machine is applicable to the sewing of materials with different curves and different-in-kind materials.

It is necessary for the joining of materials with beautiful textures added to carry out sewing of the materials and aligning their ends with notches simultaneously. The AE-200A allows, through by its unique techniques, inexperienced operators to perform this difficult and skill-requiring process simply by placing the materials on the sewing machine. The sewing machine enables control of shirring and stretching of materials on a section-by-section basis by dividing the sewing length into ten different sections at the maximum. As a result, high-quality and consistent joining of materials is enabled even if the materials have complicated curves.

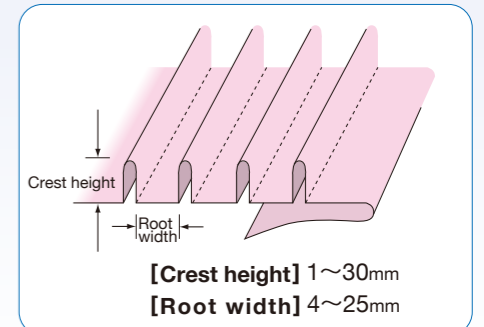
The manipulator is a JUKI unique device which enables accurate joining of materials by active pressure and rotation of the rollers.

* "Active pressure" (AP) is a JUKI unique new function that controls the pressures of the upper and lower manipulators separately according to the material and sewing specifications. (The manipulator pressures can be controlled in 10 different sections in one pattern.)

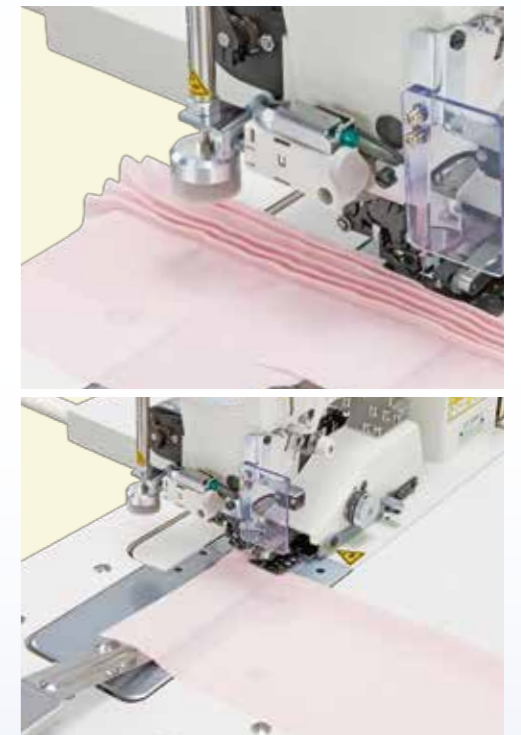


AE-200ALD Pin tuck type

The sewing machine is able to produce beautiful and equally-spaced pin tucks by installing the pin tuck device (40088621).



* The total of the crest height and root width of one pair of pin tucks is 50 mm or less.



VIET LE CO., LTD.
Sewing & Textile machines and Parts

HOTLINE: 0982 085 899



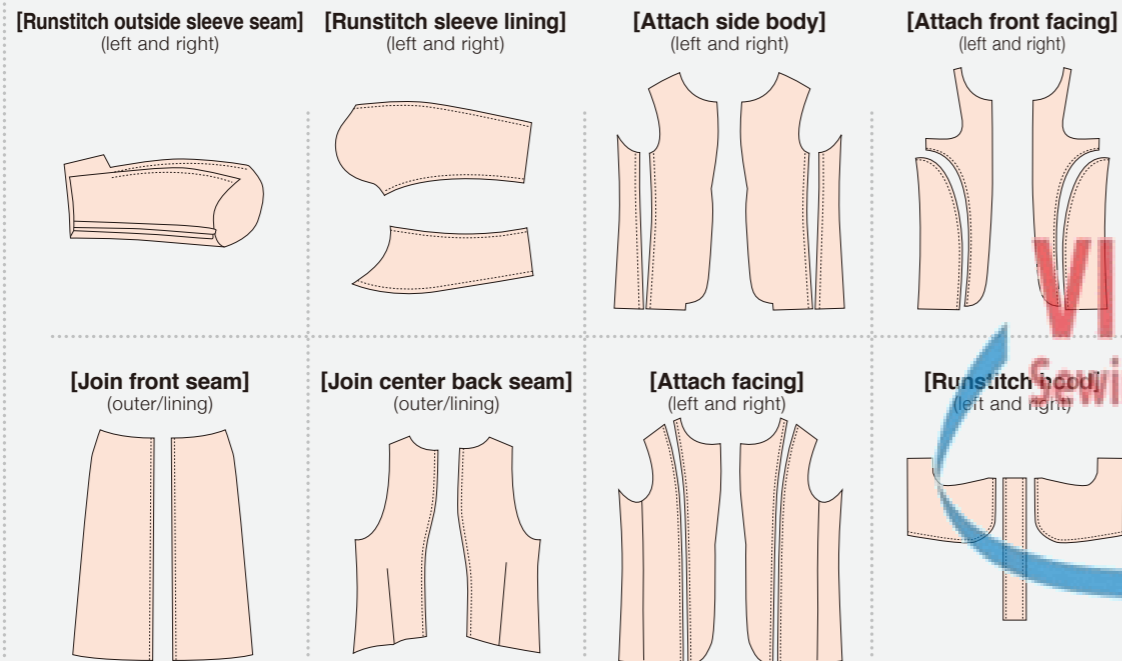
AE-200ALD-AA6

Applications

The sewing machine is applicable to many different processes such as sewing the center of the back and joining the sides of garment bodies of men's and ladies jackets and ladies skirts.

Men's wear Ladies' wear	Runstitch sleeve, Attach facing, Join princess line seam, Join center back seam, Join center back lining seam, Attach side body, Runstitch sleeve lining, Join sideseam
Coat	Runstitch raglan sleeve, Runstitch sleeve lining, Attach facing
Bottom	Join inseam, Join sideseam, Join design seam of skirt panel
Other	Runstitch hood, etc.

Example of applicable processes



Productivity is substantially increased.

The operator is only required to place materials on the sewing machine. The sewing machine automatically and continuously sews the materials while aligning the materials' ends until the sewing end is reached.

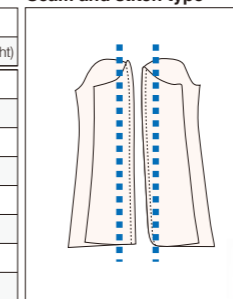
When comparing the length of time required to sew front-cloth sleeve arm top of ladies jackets by using the AE-200A with that by using a general lockstitch machine, the former requires only half the time required by the latter.

<Example of introduction>

Sewing and sewing conditions

Item	Ladies' jacket (plain)
Process	Join outer outside sleeve seam (left and right)
Sewing distance	Approx. 500 mm
Needle	DBX1 #11
Thread	Tetron #50
Sensor type	Upper 4mm / Lower 2mm
Material guide	Upper 4mm / Lower 2mm
Seam allowance	10mm
Stitch pitch	2.5mm (bottom-feed)
Sewing speed	2,800stl/min

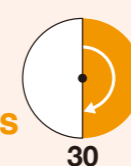
Seam and stitch type



Net processing time

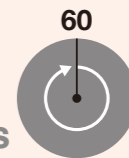
■ AE-200A

Approx. 30 seconds



■ General lockstitch machine

Approx. 60 seconds



Work efficiency is substantially increased.

* The processing time differs with sewing conditions.

Simple operation of the operation panel

Sewing data can be input and programmed with ease on the operation panel.

■ The number of pieces of sewing data that can be stored in its memory is 99 at the maximum.

Setting and selection of all sewing data can be done on the operation panel. Data items are displayed in easy-to-understand pictographs on the LCD. As many as 99 different patterns of sewing data can be stored in its memory. One sewing pattern can be divided into 10 sections. For the respective sections, the number of stitches, top and bottom differential feed, and upper and lower manipulator pressures can be numerically input.

■ Cycle sewing

The sewing machine is able to continuously carry out different processes such as joining the sides of right and left garment bodies and sewing the center of the back by means of the cycle function.

★ As many as 15 patterns can be carried out in one cycle and as many as 20 cycles can be stored in its memory.



HOTLINE: 0982 085 899

Standard devices and mechanisms for improved workability

■ Air-blow table

The sewing machine is provided as standard with an air blower which helps feed the material, thereby improving workability.



■ Handy switch

The start/pause switch is provided close at hand as standard. The switch is located near the position where the operator places the materials on the sewing machine, allowing the operator to carry out sewing in a responsive manner.



■ Bobbin winder

In order to improve the workability at bobbin thread changing, the bobbin winder is placed on the top of the main motor cover.



■ TBD system*

A timing belt drive system has been adopted for the AE-200A. This system allows the sewing machine to start sewing with no loss of the driving force.



*TBD stands for Timing Belt Drive.

Options

Various options for an improved work environment

Bobbin thread remaining amount detecting device (40088623)

The bobbin thread remaining amount detecting device warns the operator with its buzzer when the remaining amount of bobbin thread has reached a preset value. As a result, the operator can concentrate on sewing without worrying about the remaining amount of bobbin thread.



Micro-lifter (11243763)

The micro-lifter helps prevent damage and puckering when sewing shaggy materials or elastic materials.



2-pedal switch unit (40084064)

Since the sewing machine is provided with a tandem type foot pedal switch, the operator is able to start the sewing machine, lift up and down the presser foot and change over the stitch speed between high-speed and low-speed via foot control without removing their hands from the material being sewn.



4/2 cloth guide for small curves (18076356)

This cloth guide is good at guiding materials at their small curve sections.



WHEN YOU PLACE ORDERS

Please note when placing orders, that the model name should be written as follows:

Sensor / Cloth guide	Code	Power supply	Code
Join materials type For medium-weight: Upper 4mm / Lower 2mm*1	A	Single-phase 220~240V	K
Pin tuck type: Upper 4mm / Lower 2mm*2	D	Single-phase 220~240V(CE)	N
		3-phase 200~220V	D

*1 Applicable material thickness is 3.2mm for the upper clearance and 1.6mm for the lower clearance.

*2 For the sensor category "D," the exclusive pin tuck sensor is factory-installed for shipment. (To change over the specification to the material-joining type, the sensor/cloth guide parts are to be arranged separately.)

A E 2 0 0 A [] [] [] [] [] []

Sewing Table	Code
without sub-table	Z
with sub-table (Long Table)	L

* Z=Asia area

Stacker	Code
Not provided	Z
Clamp bar stacker	A

Option			Code
Pin tuck device*	2-pedal switch unit	Bobbin thread remaining amount detecting device	
			ZZ
<input type="radio"/>			A1
	<input type="radio"/>		A2
<input type="radio"/>		<input type="radio"/>	A3
<input type="radio"/>	<input type="radio"/>		A4
	<input type="radio"/>	<input type="radio"/>	A5
<input type="radio"/>	<input type="radio"/>	<input type="radio"/>	A6

* In the case where the sensor category "A" is selected, the pin-tucking device of optional categories "A1," "A4" or "A6" cannot be selected.

VIET LE CO., LTD.
Sewing & Textile machines and Parts

Others

Description	Parts No.	Feature
Bobbin winder	40088627	The automatic bobbin winder is an independent bobbin winding device.
4/4 sensor for heavy-weight materials	40084101	The cloth guides are basically best-suited for sewing heavy-weight materials. Its upper and lower clearances are both 4mm. Each clearance accommodates a 3.2mm thick material.
4/4 cloth guide for heavy-weight materials	40088212	
4/4 sensor for light-weight materials	40084102	The cloth guides are basically best-suited for sewing light-weight materials. Both the upper and lower cloth guides have 2mm of clearance. Each of the guides accommodate materials of which the thickness is 1.6mm at the maximum.
4/4 cloth guide for light-weight materials	40088211	
Throat plate for light-weight materials	22881601	
Urethane top feed dog for light-weight materials	40088215	The gauge is effective when sewing delicate light-weight fabric and other materials which are easily damaged by the standard throat plate and feed dog.
Bottom feed dog for light-weight materials	22881700	
Thread breakage detecting device	40088632	The sewing machine can be stopped immediately upon needle thread breakage by using the thread breakage detecting device.
2/2 cloth guide for small curves	18076059	This cloth guide is good at guiding materials at their small curve sections.
4/4 cloth guide for small curves	18076257	
4/2 cloth guide for small curves	18076356	
High voltage transformer	40005422	
4/2 sensor for medium-weight materials	40084100	Standard parts for joining. They should be ordered when changing the seam specification from pin-tucking to joining.
4/2 cloth guide for medium-weight materials	40088210	

HOTLINE: 0982 085 899



Clamp bar stacker

● To order, please contact your nearest JUKI distributor.